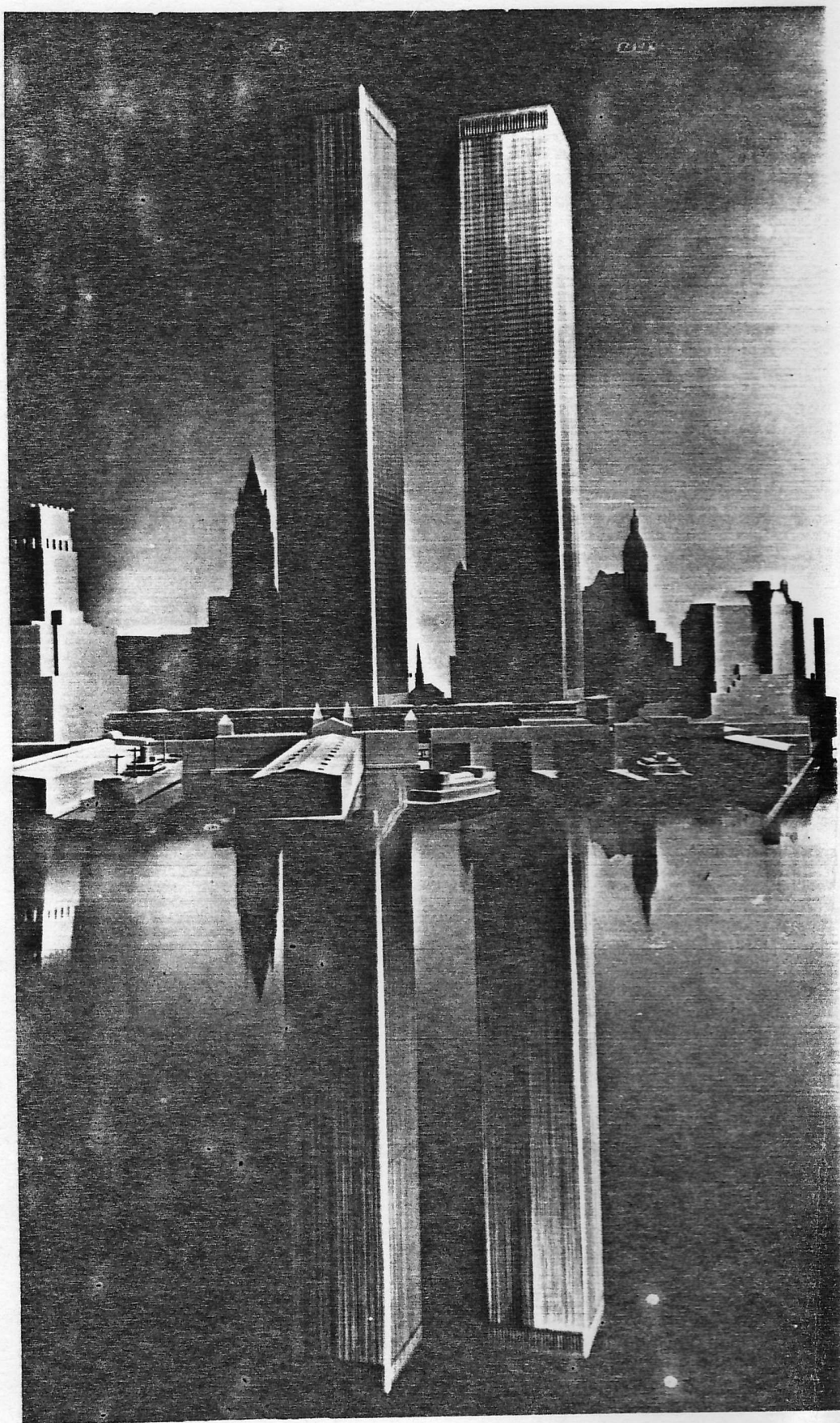




THE WORLD TRADE CENTER - LOOKING WEST, OVERALL VIEW  
SHOWS MAIN PLAZA ENTRANCE AT CHURCH STREET, PLAZA  
BUILDING, AND THE TWO GREAT TOWERS, EACH RISING  
110 STORIES TO A HEIGHT OF 1,353 FEET.

Photo credit: Balthazar Korab  
Birmingham, Mich.

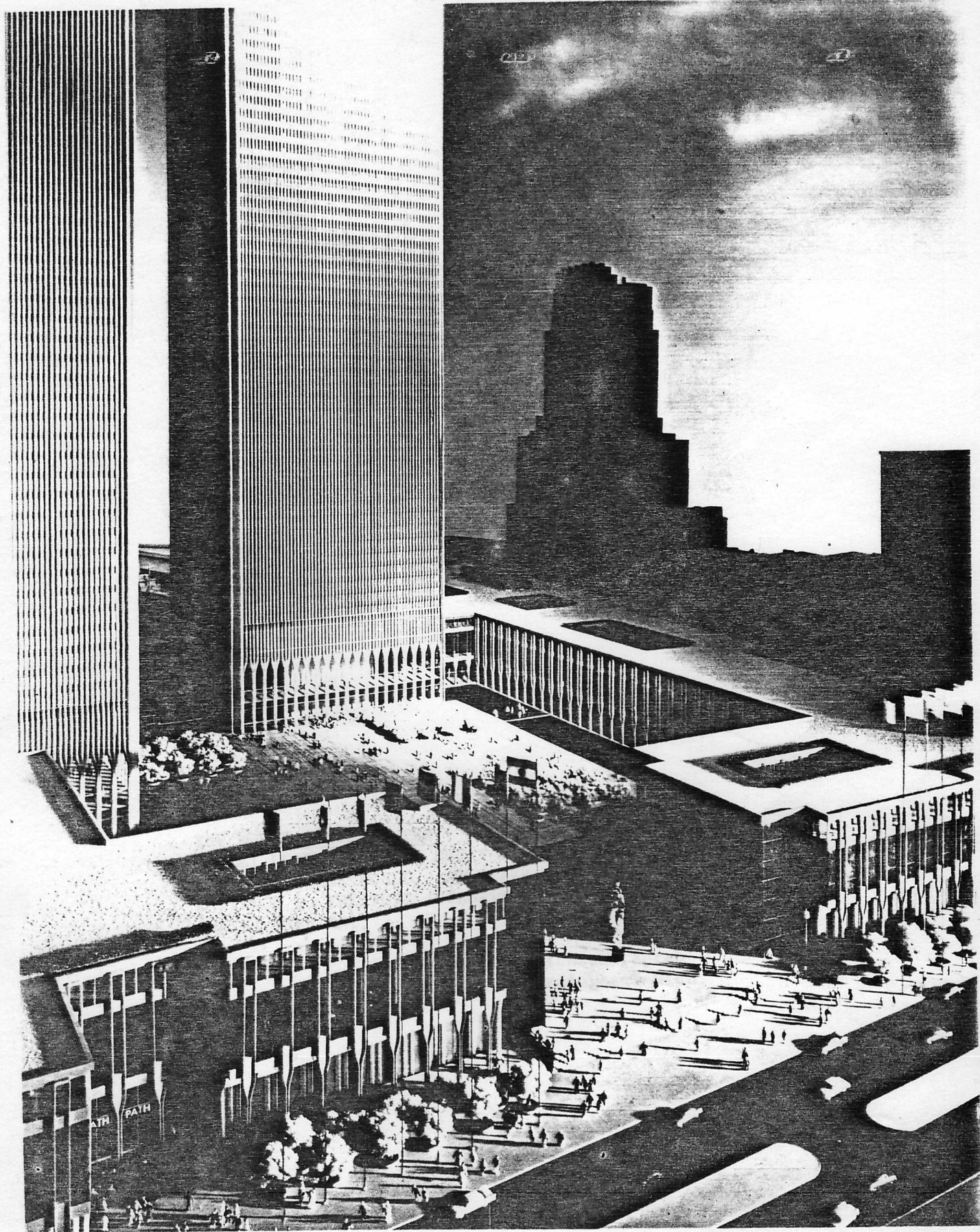




THE WORLD TRADE CENTER - THE GREAT TWIN TOWERS ARE SIGNIFICANTLY MIRRORED IN THE WATERS OF THE HUDSON RIVER, MAINSTREAM OF COMMERCE FOR THE NEW YORK-NEW JERSEY PORT. FIRMS IN THE TWO STATES WHICH DEPEND ON LOWER MANHATTAN'S WORLD TRADE FACILITIES AND SERVICES FOR THE ADMINISTRATIVE PROCESSING OF THEIR FOREIGN TRADE WILL BE GREATLY BENEFITED BY THE CENTRALIZATION OF SUCH FACILITIES AND SERVICES IN THE WORLD TRADE CENTER.

Photo credit: Balthazar Korab  
Birmingham, Mich.



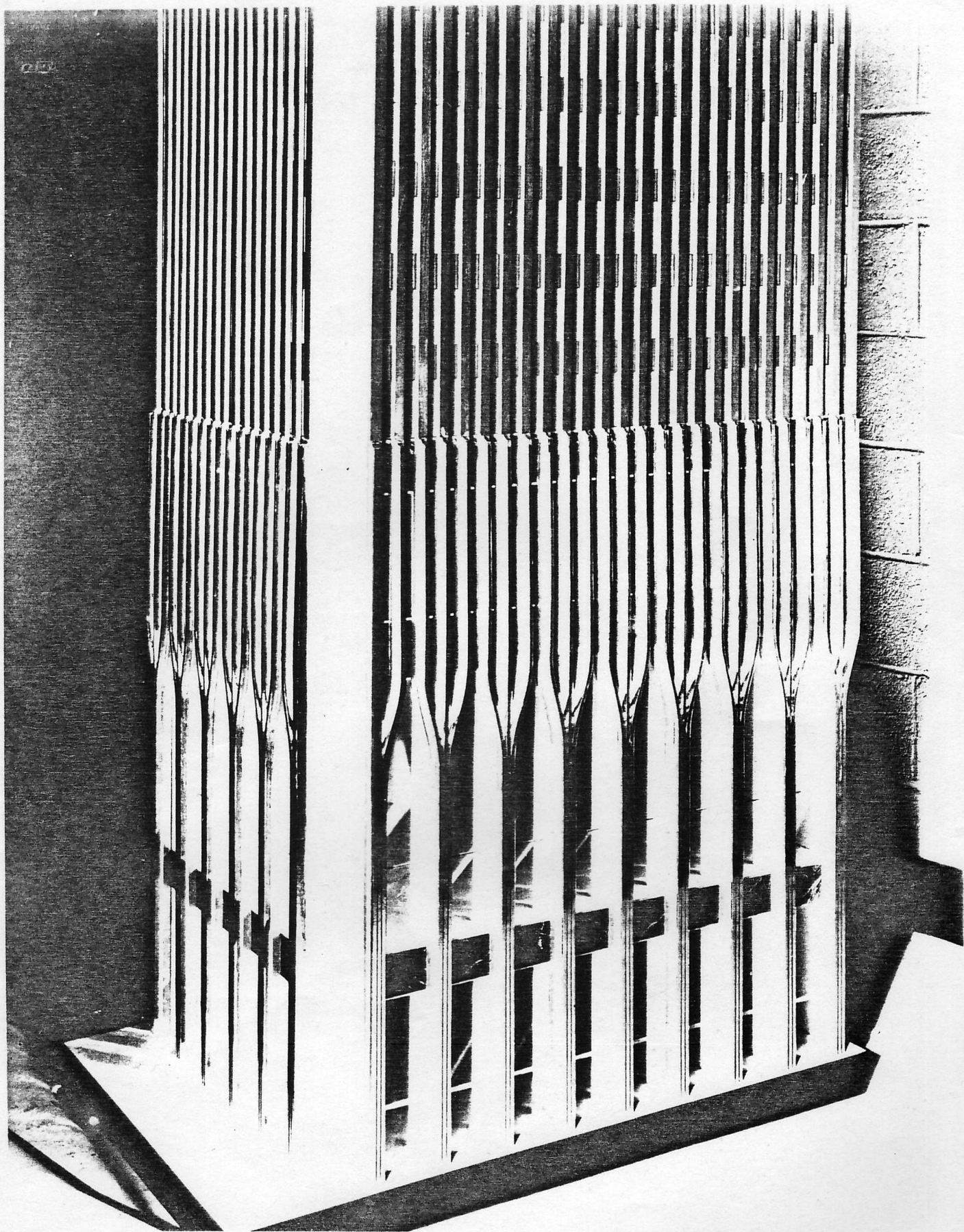


THE WORLD TRADE CENTER - MAIN ENTRANCE AT CHURCH STREET LEADS INTO THE GREAT PLAZA, ONE OF THE LARGEST IN THE WORLD. AT LOWER LEFT IS AN ENTRANCE TO THE PORT AUTHORITY TRANS-HUDSON (PATH) TERMINAL.

Photo credit: Balthazar Korab  
Birmingham, Mich.

(u) 201 8

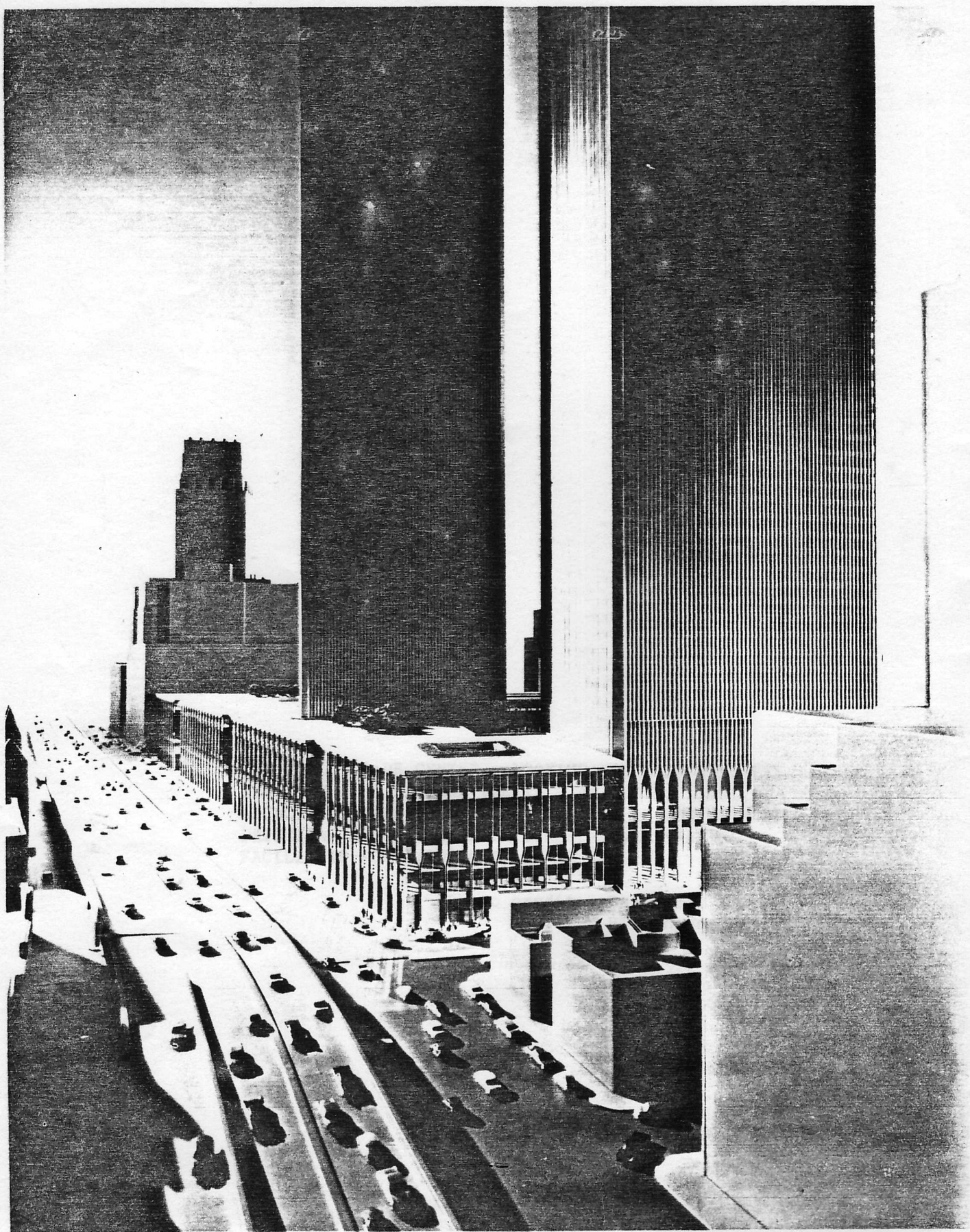




THE WORLD TRADE CENTER - ARCHITECTURAL DETAIL OF  
SECTION OF LOWER FLOORS OF TOWER BUILDINGS  
SHOWING EXTERIOR FACADE OF DRAMATIC 82-FOOT-HIGH  
THREE-TIERED LOBBY.

Photo credit: Balthazar Korab  
Birmingham, Mich.

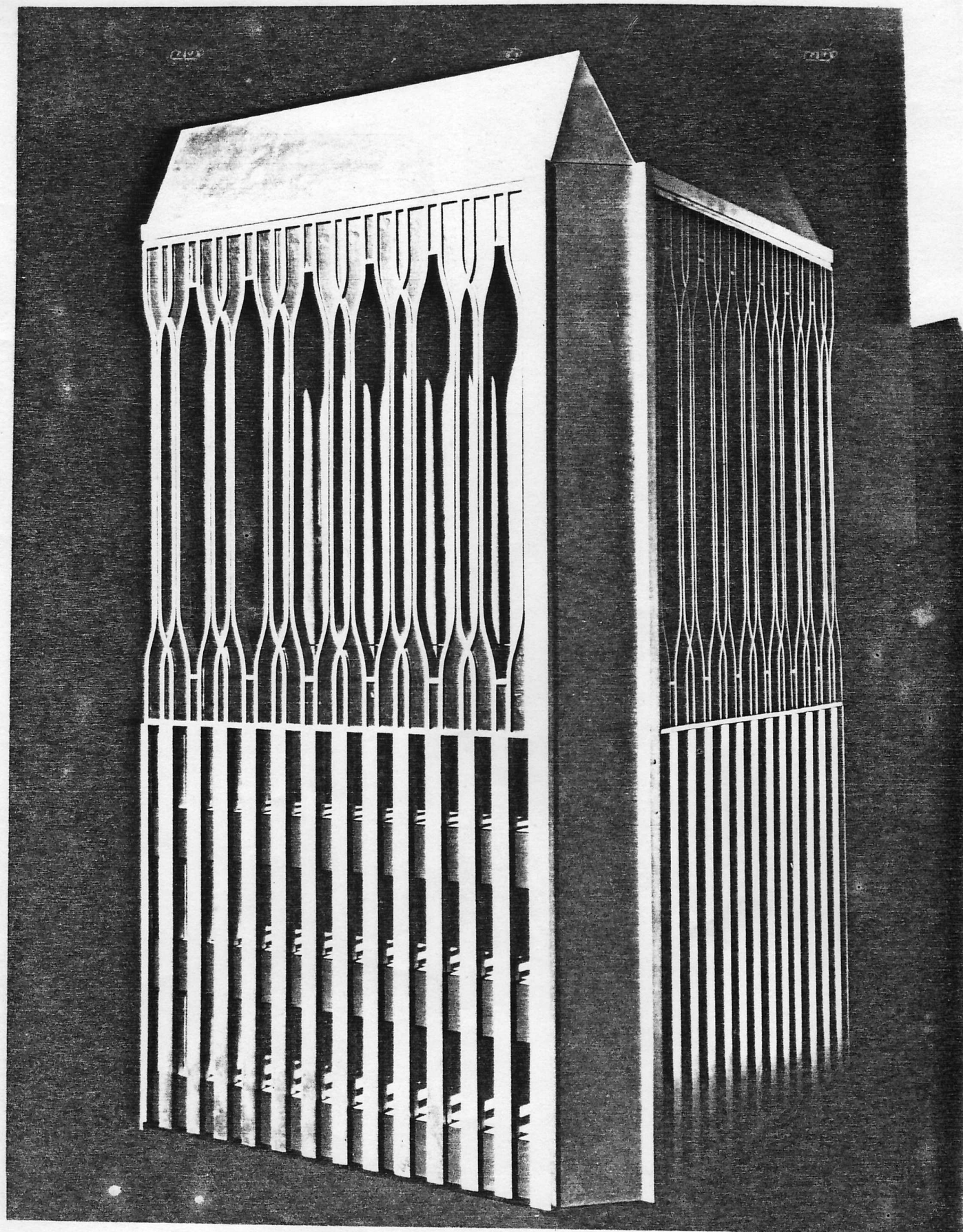




THE WORLD TRADE CENTER - LOOKING NORTH IS THE WEST  
SIDE ELEVATED HIGHWAY (LEFT). AT STREET LEVEL,  
ADJACENT TO THE WORLD TRADE CENTER, IS WEST STREET,  
PRINCIPAL ACCESS TO BELOW STREET-LEVEL PARKING  
FACILITIES FOR 1,600 CARS.

Photo credit: Balthazar Korab  
Birmingham, Mich.






THE WORLD TRADE CENTER - ARCHITECTURAL DETAIL OF  
SECTION OF TOP OF TOWER BUILDINGS SHOWING  
TREATMENT OF OBSERVATION DECK.

Photo credit: Balthazar Korab  
Birmingham, Mich.







THE WORLD TRADE CENTER - LOOKING NORTHWEST, OVERALL VIEW SHOWS THE TWIN TOWER BUILDINGS, TALLEST AND LARGEST IN THE WORLD, RISING FROM THE VAST PLAZA. THE TOWERS AND THE PLAZA BUILDING WHICH SURROUNDS THE SITE, WILL HOUSE THE UNITED STATES CUSTOMS FACILITIES, EXTENSIVE EXHIBIT AREAS, OFFICES OF CONSULATES, TRADE ASSOCIATIONS, WORLD TRADE CENTER INFORMATION SERVICE, AND OTHER WORLD TRADE SERVICES.

Photo credit: Balthazar Korab  
Birmingham, Mich.



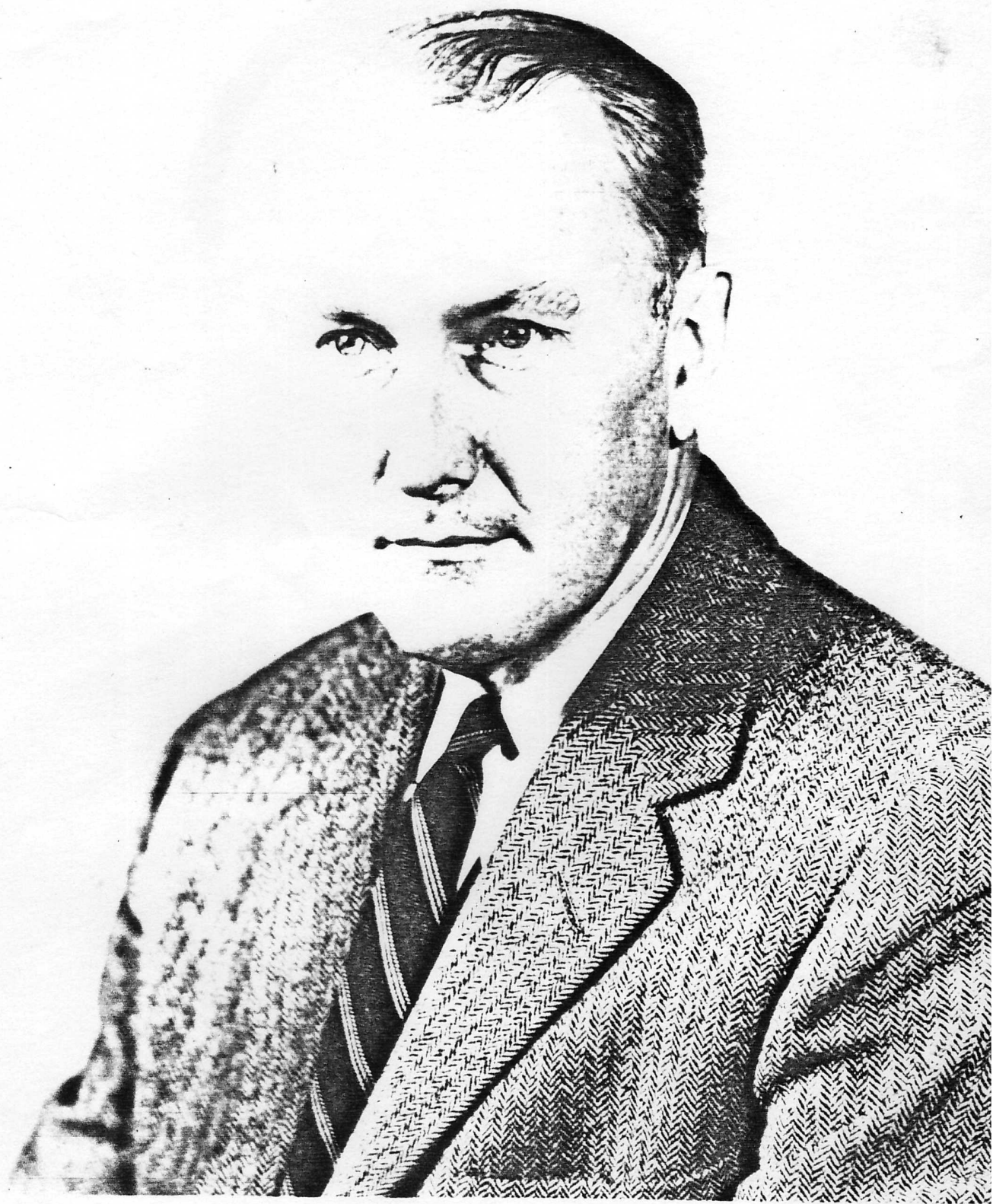


MALCOLM P. LEVY, CHIEF, PLANNING DIVISION, THE WORLD TRADE CENTER  
THE PORT OF NEW YORK AUTHORITY



RICHARD C. SULLIVAN, DEPUTY DIRECTOR OF THE WORLD TRADE DEPARTMENT  
THE PORT OF NEW YORK AUTHORITY





JOHN M. KYLE, CHIEF ENGINEER  
THE PORT OF NEW YORK AUTHORITY



GUY F. TOZZOLI, DIRECTOR OF THE WORLD TRADE DEPARTMENT  
THE PORT OF NEW YORK AUTHORITY





MINORU YAMASAKI  
MINORU YAMASAKI AND ASSOCIATES  
BIRMINGHAM, MICHIGAN

PHOTO CREDIT: JOE CLARK, DETROIT, MICH.

ARCHITECT, THE WORLD TRADE CENTER IN THE PORT OF NEW YORK



JOHN SKILLING  
WORTHINGTON, SKILLING, HELLE AND JACKSON  
SEATTLE, WASHINGTON

PHOTO CREDIT: KENNEL - ELLIS, INC.  
SEATTLE, WASHINGTON

STRUCTURAL ENGINEER, THE WORLD TRADE CENTER IN THE PORT OF NEW YORK





JULIAN ROTH (LEFT) AND RICHARD ROTH  
EMERY ROTH & SONS  
850 THIRD AVENUE, NEW YORK CITY

PHOTO CREDIT: HERB KRATOVIL, BUSINESS WEEK

ASSOCIATED ARCHITECTS, THE WORLD TRADE CENTER IN THE PORT OF NEW YORK